

A world leading device from Koriyama

# A sensor to protect your loved ones

## Main applications

### Hospitals/ nursing facilities

- Reduces burden of nighttime rounds
- Swifter response to deterioration in patient condition
- Use for health management and preventive care

### Home care

- Peace of mind for family members – check on loved ones while traveling or at work
- Doctors and nurses can remotely monitor the patient (with family approval)

### Other applications

- Monitor the wellbeing of seniors living alone

## User comments

### Nurse

Now I can monitor numerous patients at night without having to physically check each one.

The Safety Sheep Sensor α has enabled us to provide better care for our patients, especially during the night. While reducing the burden of nighttime rounds, the Safety Sheep Sensor α enables us to respond immediately to emergencies or sudden changes in condition. It also helps with health management and preventive care.

### Care Manager

The Safety Sheep Sensor α provides peace of mind for families who can't live close to their loved ones. It's amazing.

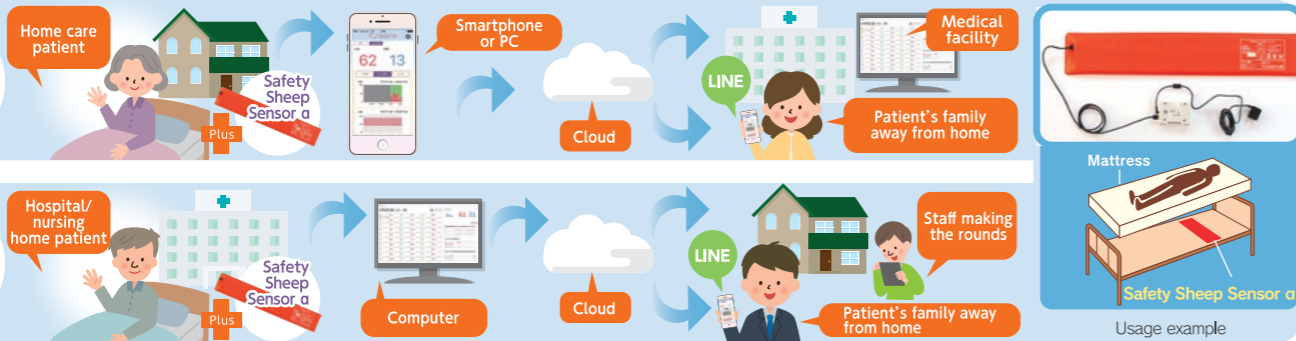
Hospital and nursing home staff can't be beside their patients at all times. However, the Safety Sheep Sensor α allows 24-hour monitoring from a PC. This innovative technology also makes it easy for families living far away to check on their loved ones by smartphone or PC.

### House call nurse

I can rapidly respond to monitoring data, reducing the burden on family caregivers.

With family approval, we can constantly monitor our patient, allowing an instant response to warning signals, by visiting the patient ourselves or alerting the family physician. The sensor also greatly reduces the burden on families during terminal care.

## Usage example 1



## Usage example 2



※This service will only domestic

## Product specifications

Item	Contents	Note	Item	Contents	Note
Model	SSS-2001		Signal method	Pressure change detection	
Classification	Machinery and Equipment 21, Testing instrument for internal organs		Target age group	12 and over	
Medical device number	07B3X10005620109		Input power source	AC100V 50-60Hz	For use in Japan only
Product name	Generic name: Motion sensor Brand name: Safety Sheep Sensor α		Power consumption	Less than 3Wh	
Classification	Class I (general medical device)		Operating temperature range	10-35°C	For indoor use only
Protection against electric shock	Class II		Operating humidity range	30-85%	For indoor use only
Dimensions	800mm (W) x 17 mm (H) x 150 mm (D)		Operating atmospheric pressure range	700-1060 hPa	
JAN code	4589810400027	Body & display	Cooling method	Natural cooling	

This product is not intended for the diagnosis or treatment of disease.

Manufacturer .....



**NI Co., Ltd.**

TEL.0120-914-469  
https://www.anshin-hitsuji.jp

Contact

R0105-M-1M-E

Next-generation IOT/ICT non-contact measuring device

Motion sensor  Anshin Hitsuji® α



Medical equipment number 07B3X10005620109



Smartphone monitoring

Computer monitoring

Versatile Applications

Integrated monitoring of multiple patients

Support for house calls

Check elderly parents living alone and far away

Go out and still keep watch on bed-ridden relative

**NI NI Co., Ltd.**

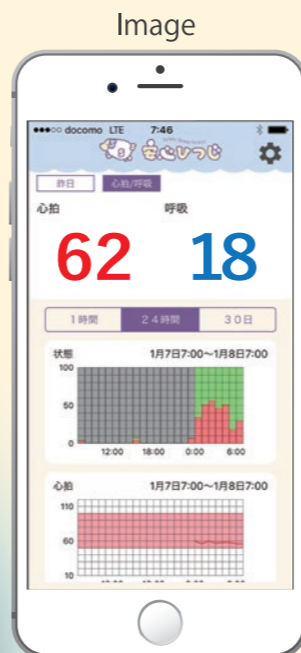
# 安心ひつじα monitors bed movement, bed vacation and sleep patterns

This motion sensor simultaneously measures body movement, heart and breathing rate during sleep, as well as alerting if a patient leaves their bed. Simply place it underneath mattress or bedding to monitor these four types of data remotely by smartphone\* or computer.

\*May not be compatible with all models.



**Affordable, simple detection system.**  
All you need is an internet connection. Affordable pricing made possible by compact detection system.



**Alert messages sent using LINE**  
Notification of previous day's health status

**Visualization of everyday activity**  
In addition to bed movement and bed vacation, provides precise measurements of heart and breathing rate.

**Non-contact measurement - doesn't disturb sleep.**  
Place the ultra-thin sheet underneath the patient's mattress for no-impact monitoring.



**Detailed graph display**

## Monitor display - Functions and Features

Track and check daily health and living conditions

- ① Detect bed vacation
- ② Color coding shows bed occupancy, bed vacation and body movement
- ③ Vital signs for selected user are displayed on right, with a graph showing changes in heart and breathing rate over a set period (last hour, current day, previous day).

Blue: bed occupied    Gray: bed vacated    Orange: body movement



**① User details**

Male: 101 山田太郎 62 18  
Female: 102 山田花子 58 18

**User status**  
Under measurement (blue), Patient moving (orange), Bed vacated (gray)

**User status displays**  
Bed, etc. display Signal received (blue), No display of bed, etc. No signal (gray), No display Not covered by contract (white)

**Emergency alert icon**  
Background color changes to pink during emergency alerts.

**③ User graphic screen**

Name: 山田太郎    Room No.: 101

Heart rate: 62 bpm    Breathing rate: 18 bpm

**Status bar**  
Legend: Bed 'vacated' (gray), Body 'movement' (orange), Under 'measurement' (blue)

Graphs for Heart rate and Breathing rate over time.

**Four data types visualized**

